

Connect network drive

General:

If you log on to an FH Computer with an active (not graduate!) account, the network drives are connected automatically.

The default drives are:

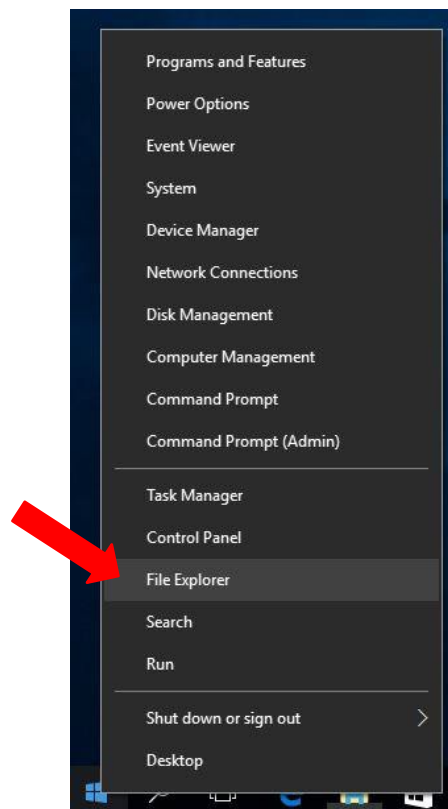
Z: Private drive

M: Used to manage the computer. (ZIT)

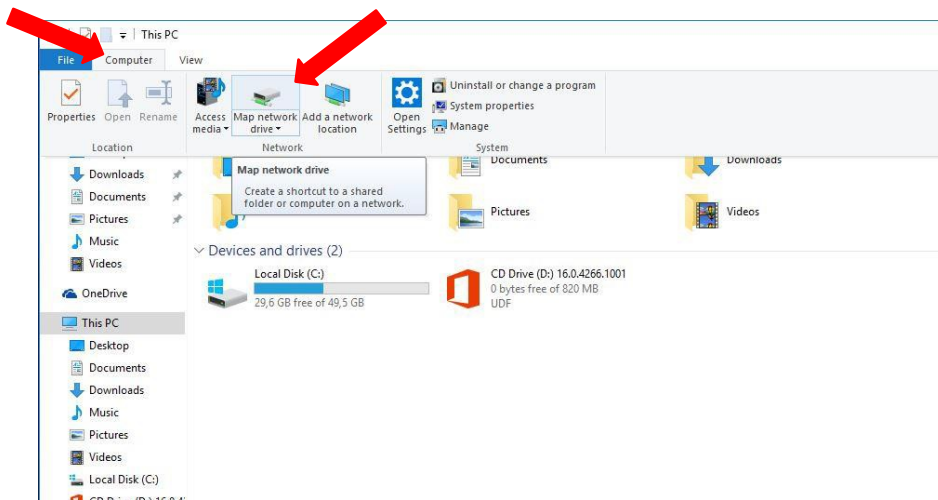
You can manually connect to additional network drives.

Connect a network drive:

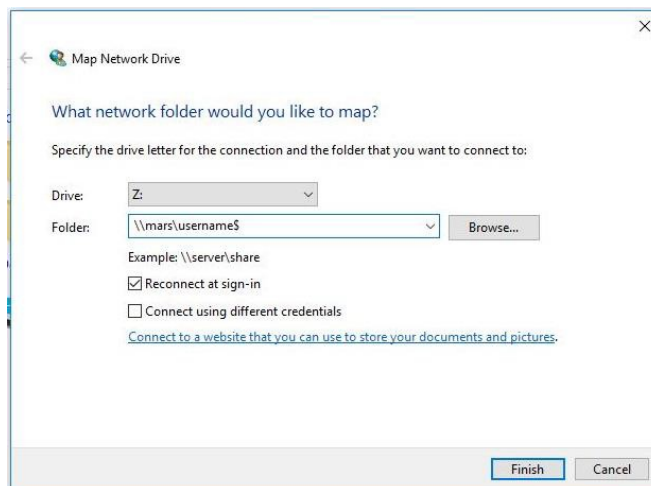
- 1.) Right-click on the Windows icon  and then click the „File Explorer“.



2.) Click on the „Computer“ tab and then on the button „Map network drive“.



3.) Select a drive letter and enter the network path to the file share.



Networkdrive Z: (Employee Graz)
Networkdrive Z: (Employee Kapfenberg)
Networkdrive Z: (Employee Bad Gleichenberg)

[\\mars\username\\$](#)
[\\venus\username\\$](#)
[\\seattle\username\\$](#)

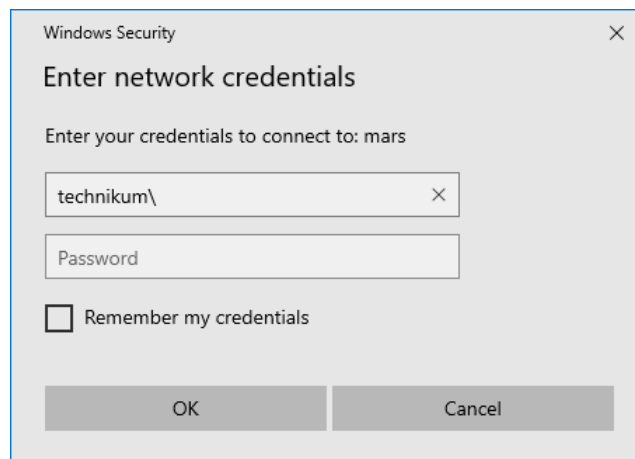
Networkdrive Z: (Students Graz)
Networkdrive Z: (Students Kapfenberg)
Networkdrive Z: (Students Bad Gleichenberg)

[\\mars\studycourse\\$\username](#)
[\\venus\studycourse\\$\username](#)
[\\seattle\studycourse\\$\username](#)
(z.B.: [\\mars\ind16\\$\username](#))

- Networkdrive L: [\\mars\lv_studycourse\\$](#) (z.B.: [\\mars\lv_ind\\$](#))
 [\\venus\lv_studycourse\\$](#)
 [\\seattle\lv_studycourse\\$](#)
- Networkdrive P: [\\mars\projects_studycourse\\$](#) (z.B.: [\\mars\projekte_bbw\\$](#))
 [\\venus\projects_studycourse\\$](#)
 [\\seattle\projects_studycourse\\$](#)
- Additionally for employee:
Networkdrive O: [\\mars\studycourse\\$](#) (z.B.: [\\mars\aud\\$](#))
- Networkdrive T: [\\technikum.fh-joanneum.local\fhj](#) (Applies to all locations)

4.) Only necessary if you use a private device!

If you are prompted for username and password make sure to prefix it with **\technikum**



4.1) If you already saved the username without the **technikum** prefix click “More choices” and “Use a different account” to provide a valid username.

